



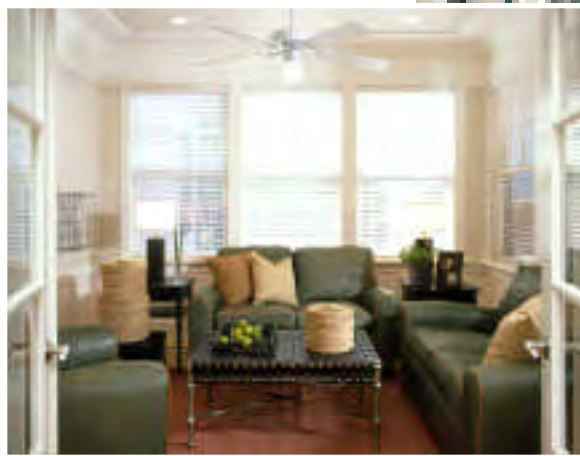
On Bald Head Island's Currituck Way, a multi-colored exterior sets this Idea House apart from its neighbors. "I wanted the building to stand out," architect Chuck Dietsche says of the earthy reds, deep greens, and mustard yellows. For a textured look, Chuck combined siding styles from one company. Durable siding shingles on top and lap siding below dress the cottage exterior. Made from a composite of fiber and cement, this siding holds up longer than wood in the marsh climate, keeping painting and maintenance to a minimum.

Street side, a live oak frames the home's front walk. Chuck and landscape architect Donna Ray Mitchell preserved the lot's older trees and added plantings to enhance the home's design. "The oak tree is our entrance," says Chuck. "The architecture and landscape have to work together."

Inside the front door, light from a bank of windows casts dappled shadows

on horizontal beaded-board walls. "This house is so beautifully detailed," says interior designer Linda Woodrum, "we kept the interiors minimal, spare, and clean."

Just off the entry, glass doors open to a sitting room. "The upstairs is a public space for people getting together. This is quieter," Linda says. Supple green leather love seats and a club chair lend comfortable seating.



The sea breezes and other pleasures of the coastal environment do also carry an inevitable dose of humidity. The architect chose technology that provides quiet comfort while filtering outside air to protect interiors.

• Heating and air: Lennox Industries. Siding: James Hardie Siding Products.



BY LACEY N. HOWARD
PHOTOGRAPHY BY JOHN O'HAGAN



east beach hideaway

Nestled among oaks, palmettos, and pines, our second Idea House on Bald Head Island offers abundant marsh views as well as intriguing ideas for use of color, pattern, and texture.



A trio of hanging lamps provides a warm glow over the dining area. Beneath them, an antique oil-finished table and eight slipcovered chairs make a classic statement in the lofty expanse. "When you don't have window treatments, you need to have fabric to soften the space," Linda says of the white cotton slipcovers. Asian-inspired matching consoles assist in the transition between living and dining areas. The substantial pieces serve as makeshift bars for entertaining.

• Furniture: Harden. Windows: Pella.



A short climb to the second level brings visitors to the open, airy great room loaded with stunning details. Chuck chose divided windows and doors for their historic look. Their insulated glass also makes them more energy efficient. Dramatic beaded-board ceilings slope from 9 to 14 feet in height. Overhead breaks act as room dividers between the living,

dining, and kitchen areas. "This house is a jewel," says Linda. "There was incredible attention to scale and trim."

In the living area, taupe-and-cream striped sofas face each other. On one end, a decadent green armchair awaits weary loungers, and at the other, a tufted red leather ottoman provides extra seating. "The room's bold scale was something we had to keep in mind," Linda says. "Everything in it has to be strong or risk being overpowered. So we used bold stripes and big splashes of red."

In the center of the space, a glass-and-metal cocktail table holds stacked books and shiny red apples. To add other natural elements to the treetop-height room, Linda accessorized with baskets, a woven fiber rug, and floor lamps with sea-grass shades. Above the mantel, a vivid painting of palms by Charleston artist Patricia Madison Lusk breaks the white space, acting as another window to the outdoors.





Counters are free for meal preparation, thanks to wise planning that included placing the microwave above the oven (inset). Beside them is a counter-depth refrigerator with roll-out shelves. A teak table fills the dining porch with casual style. A teak serving cart with an Italian tile surface and trays makes entertaining easy. • Appliances: Jenn-Air. Cookware: Anolon. Fixtures: Delta Faucet Co.

gracious hospitality seems effortless in the well-equipped kitchen. “This room is truly for entertaining,” Linda says. A 48-inch cooktop with four gas burners helps any host prepare for gatherings.

Countertops are tiled; a solid-surface material covers the island, including the bar that separates the kitchen from the great room. Green painted and natural wood cabinets provide storage for the

titanium cookware here. Above the tile counters, glass-front cabinets flank large windows.

A pair of oversize “fence posts” anchors the island. A deep sink with a nickel-finished faucet, sprayer, and soap dispenser helps keep kitchen work under control. Below, a stainless-steel dishwasher with a high-pressure system takes care of cleanup. Just outside on the screened porch, a second dining area overlooks the marshland.



Throw pillows embellished with small squares of mother-of-pearl reflect the streaming sunlight and add a hint of the shore. A nod to glass fishing floats, glass lamps with pewter shades are substantial partners on bedside tables.

• Linens: Charisma. Ceiling fan: Westinghouse.

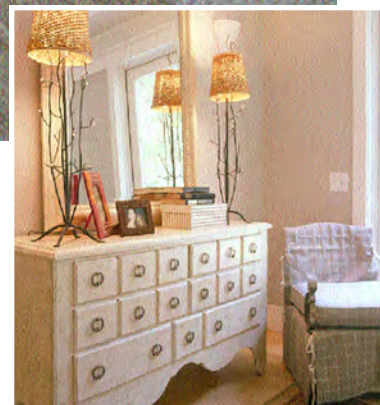
SPECIAL THANKS

Our *Coastal Living* Idea House editorial team would like to extend thanks to J.A. Cobb, Patricia Madison Lusk, Palecek, and Present Tense for their generosity. Their products and talents add a distinctive touch to this project.

Off the great room, French doors open to an ethereal bedroom, bedecked in calming neutrals and luxurious fabrics. “The palette is romantic in a tailored way,” Linda says. Windows look out to leafy branches. “You’re tucked up in the treetops,” she says. Instead of hanging draperies on the windows or glass doors, the designer tied them to the canopy bed. “We didn’t want to block the doors, but for a sense of privacy and seclusion we draped the bed. It just feels cozier,” she says.

Above the stove-black, pencil-post bed, a ceiling fan circulates air, adding a seductive breeze that billows the fabric. The fan’s durable resin blades, powder-coat finish, and stainless-steel hardware protect it from the damp coastal climate.

A sitting area is tucked into an alcove framed by a wide arch. For a clean look, Linda covered the sofa and armchairs in a tiny-check fabric in taupe and white. Floor lamps with rattan shades continue the neutral color scheme. Sumptuous dotted and striped linens, all in a shade known as sandalwood, dress the bed.



Two plush armchairs and a matching ottoman create a cozy master reading nook. “The palette here is very tranquil,” Linda says. She continued the great room’s red highlights in the master suite with floral throw pillows, a bolster, and, in the bath, vivid red towels. • Towels: Royal Velvet.

For the downstairs master bedroom, Linda chose a bevy of soft grays for walls and furniture. A queen-size bed has a parchment-colored quilt and a throw three shades darker. As a winter-time option, the designer had extra quilts made into slipcovers for the wooden headboard and footboard. A checked fabric covers several chairs and an ottoman. A British-inspired wool rug anchors the room and connects the bed, sitting area, and other furniture. Elsewhere, a distressed entertainment center and a console with metal drawer rings offer storage. Marble-topped

tables, jeweled photo frames, and metal and natural-fiber lamps bring tactile interest to the room.

In the adjoining bath, a jetted tub washes cares away. Tiny square tiles compose the tub surround and floor, repeating the grays of the bedroom. Double sinks bring convenience, and Victorian-style faucets complete the room’s polished look.

Turn to page 94.

EAST BEACH HIDEAWAY

OUTDOOR LIVING

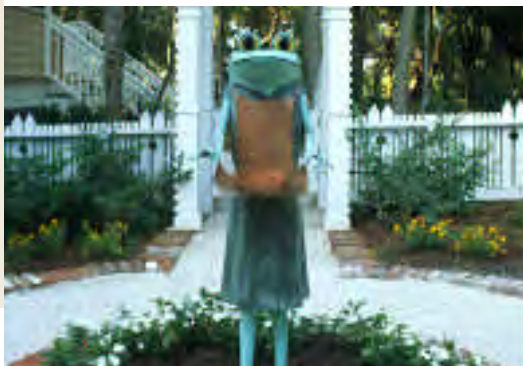


In several outdoor living areas, comfortable seating lures owners and guests for a shady respite. Composite decking withstands environmental stresses. • Awning and cushion fabric: Sunbrella. Decking: Trex. Outdoor furniture: Barlow Tyrie.

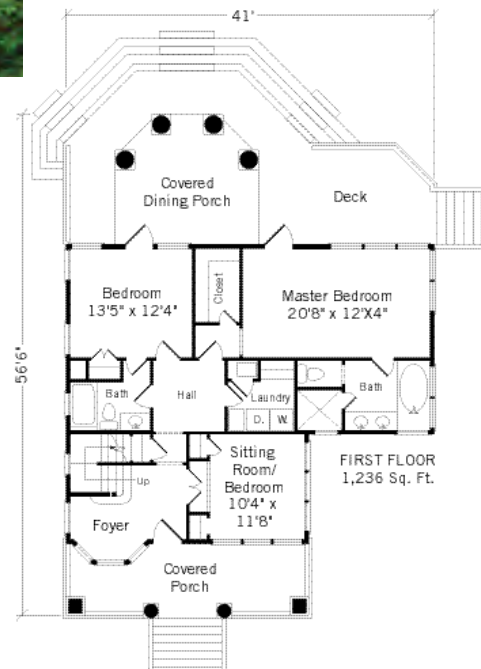
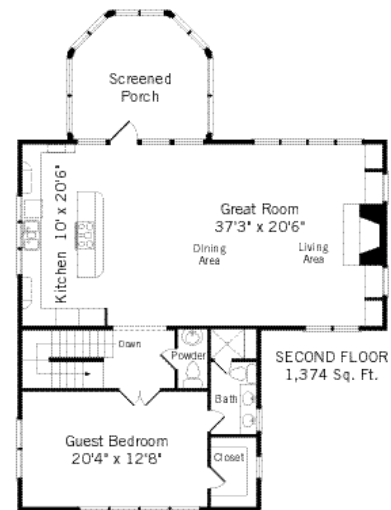
With more than 1,000 square feet of decking, the home embraces outdoor living. A Southern-style porch graces the front of the house, welcoming visitors. A large deck extends across the rear and leads to the backyard,

where dense natural vegetation provides privacy and shade during warm days on Bald Head. The deck's footprint follows the curves of the upstairs screened porch. "The rounded detail is in keeping with the romance of a cottage," Chuck explains.

Ideal for years of use, teak tables and chairs decorate the decks. The wood furniture, which will weather to a beautiful silver-gray over time, teams with green fabric cushions. "The deck furniture provides a wonderful setting for enjoying the view," says Linda. Outside the master bedroom, wheeled lounge chairs with pull-out trays beckon, while an awning shades afternoon naps. For sunbathing, the awning retracts at the simple push of a button.



The landscape team gave the courtyard a walking path of crushed oyster shells. The paths and an arbor connect the main house to the garage. A private outdoor shower, tucked behind the garage, awaits those returning from the beach.




Though this house isn't on the beach, the Atlantic climate can still wreak havoc. The developers worked with the architect to choose building products that could withstand the elements while retaining their beauty over time. They chose decking made from recycled and reclaimed wood and plastic that requires minimum upkeep. They also selected windows and doors with aluminum exteriors and wood interiors for their energy efficiency—as well as unlimited custom color

choices. "We really liked the selection," says developer and builder Kent Mitchell.

To visually connect the house and garage, landscape architect Donna Ray Mitchell and landscape designer Ann Arroyas created an ornamental courtyard garden. "We planted perennials to provide color," Donna says. "And J.A. Cobb's frog girl fit so nicely," Ann adds. For the rest of the lot, Donna and Ann worked within the framework of a

picket fence and old oaks. "We used as many native plants as possible to maintain the indigenous character of Bald Head," Donna says.

Call 800/755-1122 to order working drawings of the Idea House (COL-0211-423). Costs: single planning set, \$425 (not for construction); five sets, \$525; eight sets, \$615; reproducible sets, \$925. Postage, handling, and applicable taxes will apply.  *Garage plan:* coastalliving.com

- 4 BEDROOMS, 3½ BATHS
- HEATED AREA: 2,610 square feet
- FIRST FLOOR: 1,236 square feet
- SECOND FLOOR: 1,374 square feet
- PORCHES: 1,025 square feet
- CEILING HEIGHT: 9 feet bedrooms, 9 feet sloping to 14 feet main living area
- FOUNDATION: Crawlspace

Reminder: Site conditions vary by location, so we recommend consulting a local architect and/or engineer before starting construction. Plans do not include fully engineered framing plans, heating and plumbing plans, or material quantity lists. All plans are copyrighted. All square footage is approximate.

NORTH CAROLINA

Bald Head Island

The *Coastal Living* Idea Houses are open for tours now through December 31, 2002, 10 a.m.–3 p.m. Wednesday–Sunday (closed Monday–Tuesday). Admission is \$15 general, \$30 lunch pass, \$40 dinner pass, and from \$158 for overnight pass. All passes include round-trip ferry ticket. From I-95 enter Southport on Route 211 (Howe Street). Turn right onto West Ninth Street and continue to ferry landing. Take the 20-minute ferry to Bald Head Island and tram from Harbour Village to the Idea Houses. For more information, call 800/234-1666.



From left: superintendent Vinson Lutheran, project coordinator Michelle Knotts, marketing manager Kelley Sellers, estimating and purchasing manager John Mallard, director of construction Eric Coffey



Developers Mark Mitchell (left) and Kent Mitchell; Interior designer Linda Woodrum (front) and assistant Susan McKinlay Johnson



From left: Family Reunion architect George Graves, landscape architect Donna Ray Mitchell, East Beach Hideaway architect Chuck Dietsche, landscape designer Ann Arroyas